

Discount Schemes

Multiple Subject/Siblings Discount

**only applies to programme fees*

- 2 subjects - 5% off each prog
- 3 subjects - 10% off each prog
- 4 subjects - 15% off each prog
- 5 subjects or more - 20% off each prog

Payment Plan Discount

**only applies to programme fees*

- Half-Yearly (by Semester) - additional 2% off each prog

P6: 1st Month & April 2026

Other Levels: 1st Month & June 2026

- Annual (whole AY) - additional 5% off each prog

PSLE Maths Mastery Booster Package

✓ P6 Maths + 2 other subjects (10% discount each) + FREE Maths Booster

✓ P6 Maths + 3 other subjects (15% discount each) + FREE Maths Booster

✓ P6 Maths + 4 other subjects (20% discount each) + FREE Maths Booster

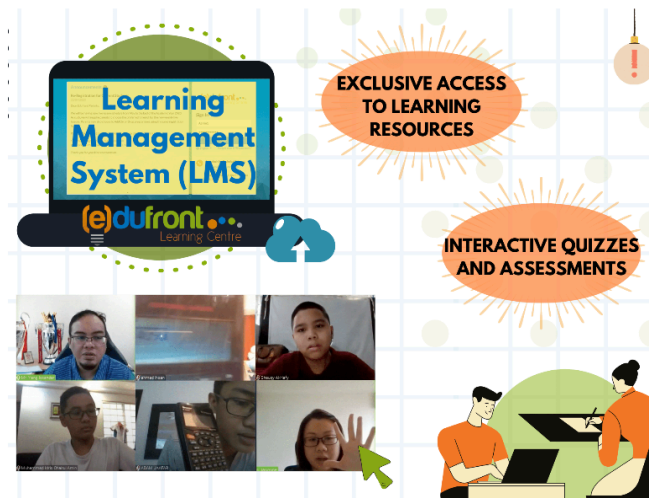
P3-P6 Maths Booster Package

- ✗ Enrol in the regular Maths Mastery Programme
- ✗ Get an additional Weekly Maths Booster class at 50% OFF

P3-P6 Malay Mastery Combo Promo

- ✗ Enrol in Malay Mastery Programme + Karangan Writing Programme
- ✗ Enjoy 20% OFF both subjects

All discounts are capped at 50%



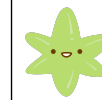
Edufront Learning Centre (Woodlands)

Blk 721 Woodlands Circle #01-122
Singapore 730721

Opening Hours:

Tues, Wed, Thurs & Fri: 2pm - 9pm
Sat & Sun: 8.30am - 5pm

Tel: 9189 5905 (SMS/Whatsapp)



(e)dufront
Empower Your Learning™



Woodlands Branch (Blk 721)

Schedule for Academic Year 2026

Kindergarten & Primary Programmes

Class Commencement Date:

■ 4th November 2025 (Primary 6)

■ 2nd December 2025 (Other Levels)

! Please note that a **minimum of 2 students** is required to start a class.

Overall Fee Structure (incl. of 9% GST)

■ One-off Registration Fee: **\$32.70/new student**

■ Refundable Deposit: **\$50/subject**

■ LMS & Materials Fee (per semester): **\$65.40/subject**

*Fees can be pro-rated depending on the start date

Trial Lesson: \$10.90/lesson

Why Edufront?

1. Proven Track Record
2. NIE-Trained and Subject Specialist Tutors
3. Comprehensive Programmes
4. Small Group Classes
5. Technology Enabled Learning
6. Flexibility of Physical & Online Classes
7. Trial Class



BEST PSLE TUITION CENTRE

WOODLANDS BRANCH	
K2 Class (Monthly: \$185.30 per subject)	
Programme	Day & Time
Malay	Wednesday 5.30pm - 7pm
	Saturday 3.30pm - 5pm

Primary 1 (Monthly: \$196.20 per subject)	
Programme	Day & Time
English	Saturday 1.30pm - 3pm
Maths	Wednesday 5.30pm - 7pm
	Saturday 11.30am - 1pm
Malay	Tuesday 5.30pm - 7pm
	Saturday 3.30pm - 5pm

Primary 2 (Monthly: \$207.10 per subject)	
Programme	Day & Time
English	Saturday 1.30pm - 3pm
Maths	Friday 5.30pm - 7pm
	Saturday 9.30am - 11am
Malay	Wednesday 5.30pm - 7pm
	Saturday 3.30pm - 5pm

Primary 3 (Monthly: \$218.00 per subject)	
Programme	Day & Time
English	Sunday 9.30am - 11am
Maths	Saturday 9.30am - 11am
	Sunday 1.30pm - 3pm
Maths Booster	Friday 5.30pm - 7pm
	Saturday 9.30am - 11am
Science	Sunday 3.30pm - 5pm
Malay	Tuesday 5.30pm - 7pm
	Sunday 11.30am - 1pm
Malay (Karangan)	Tuesday 7.30pm - 9pm

WOODLANDS BRANCH	
Primary 4 (Monthly: \$228.90 per subject)	
Programme	Day & Time
English	Saturday 1.30pm - 3pm
	Sunday 9.30am - 11am
Maths	Wednesday 7.30pm - 9pm
	Sunday 1.30pm - 3pm
Maths Booster	Saturday 9.30am - 11am
	Sunday 1.30pm - 3pm
Science	Friday 7.30pm - 9pm
	Sunday 3.30pm - 5pm
Malay	Tuesday 7.30pm - 9pm
	Saturday 11.30am - 1pm
	Sunday 11.30am - 1pm
Malay (Karangan)	Tuesday 5.30pm - 7pm

Primary 5 (Monthly: \$239.80 per subject)	
Programme	Day & Time
English	Wednesday 7.30pm - 9pm
	Sunday 9.30am - 11am
Maths	Friday 5.30pm - 7pm
	Saturday 9.30am - 11am
	Sunday 1.30pm - 3pm
Maths Booster	Wednesday 7.30pm - 9pm
	Sunday 1.30pm - 3pm
Science	Friday 7.30pm - 9pm
	Sunday 3.30pm - 5pm
Malay	Tuesday 7.30pm - 9pm
	Friday 7.30pm - 9pm
	Sunday 11.30am - 1pm
Malay (Karangan)	Wednesday 5.30pm - 7pm
	Friday 5.30pm - 7pm

WOODLANDS BRANCH	
Primary 6 (Monthly: \$250.70 per subject)	
Programme	Day & Time
English	Wednesday 7.30pm - 9pm
	Sunday 9.30am - 11am
Maths	Friday 5.30pm - 7pm Tutor: Mr Yang (Hybrid)
	Saturday 9.30am - 11am
	Sunday 1.30pm - 3pm
Maths Booster	Friday 5.30pm - 7pm
	Saturday 9.30am - 11am
	Sunday 1.30pm - 3pm
Science	Friday 7.30pm - 9pm Tutor: Mr Yang (Hybrid)
	Sunday 3.30pm - 5pm
Malay	Tuesday 7.30pm - 9pm
	Saturday 11.30am - 1pm
	Sunday 11.30am - 1pm
Malay (Karangan)	Wednesday 7.30pm - 9pm
	Saturday 1.30pm - 3pm

[New] Malay (Karangan) Programme
📌 Malay (Karangan) focuses largely on writing malay composition, an elaboration of our Saya Boleh Mengarang workshop that we have been conducting in schools.
📌 We do not provide karangan during the regular Malay class

Maths Booster Programme
Our Booster Classes help students revisit key P5/P4/P3/P2 topics and strengthen their foundation in preparation for the PSLE/exams.
📌 Recommended for students scoring 60% and below, but open to all who want extra support.
📌 Taken in addition to the regular class, providing twice the support each week.